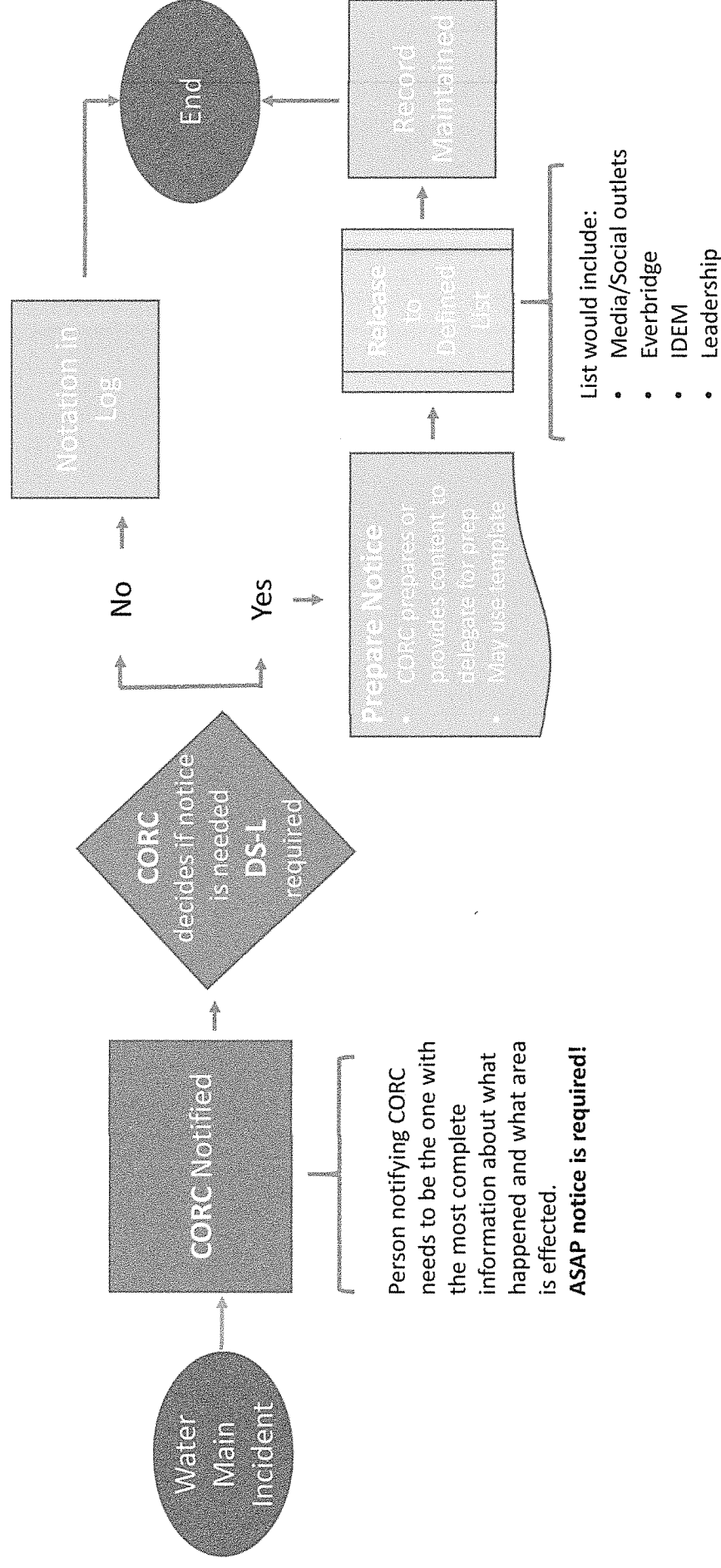
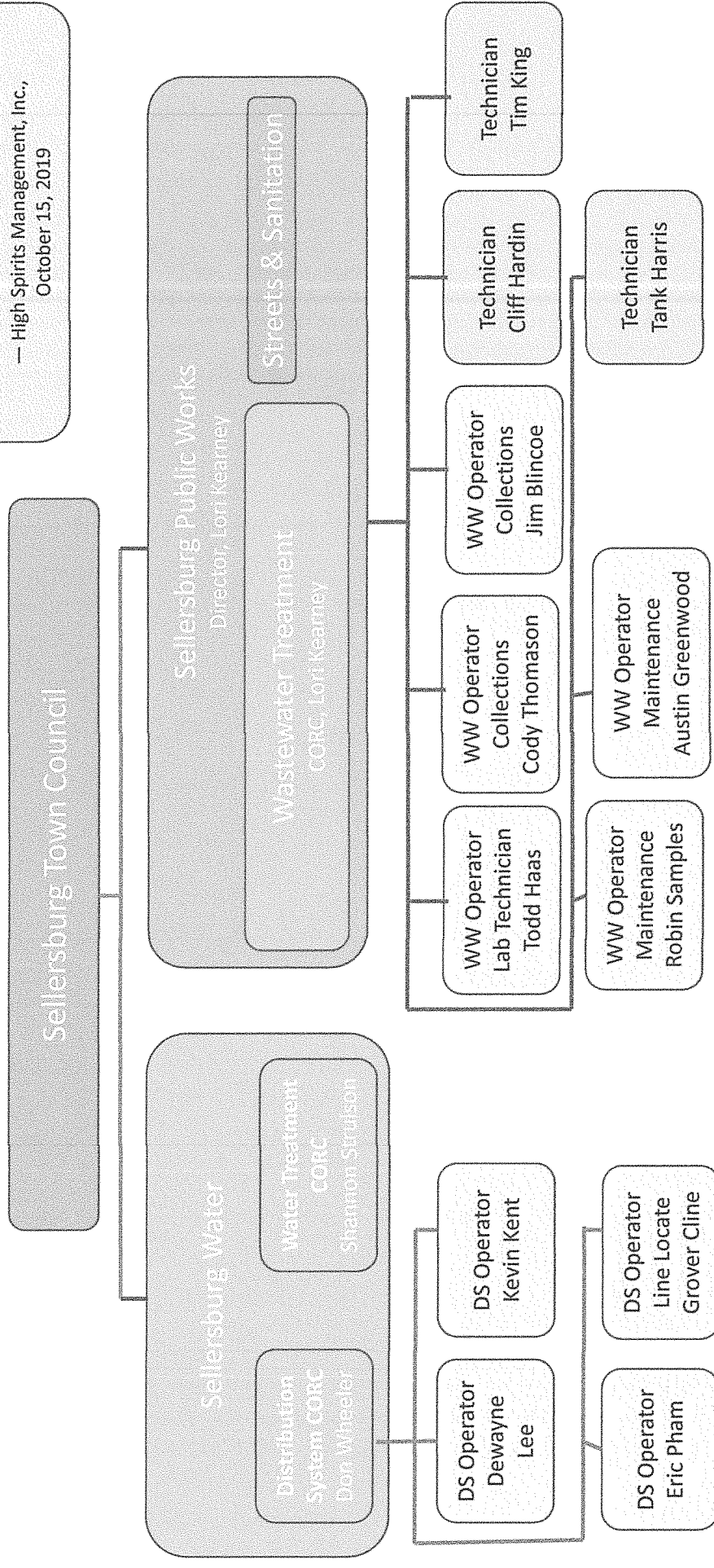


# Compliant Decision Process for Public Notices Certified Operator in Responsible Charge (CORC)



# Proposed Alignment & Staffing



One possible scenario that takes into account our understanding of the current goals and staff available.

— High Spirits Management, Inc.,  
October 15, 2019

## Putting Main into Service

## Disinfection &amp; Flushing

☐ Purpose

- Before being put into service for distributing water to customers, new or repaired mains must be —
  1. Thoroughly disinfected
  2. Dechlorinated
  3. Flushed
  4. Water tested for bacteriological quality



(119)

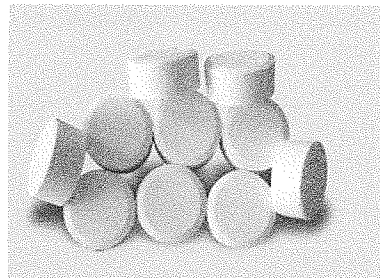
119

## Putting Main into Service

## Disinfection &amp; Flushing

☐ Disinfection

- Chlorine compounds most commonly used
- Chlorinated water should normally be left in pipeline for **24 hours**
  - *If unfavorable or unsanitary conditions existed during installation, period may have to be extended to 48 or 72 hours*



(120)

120

## Putting Main into Service

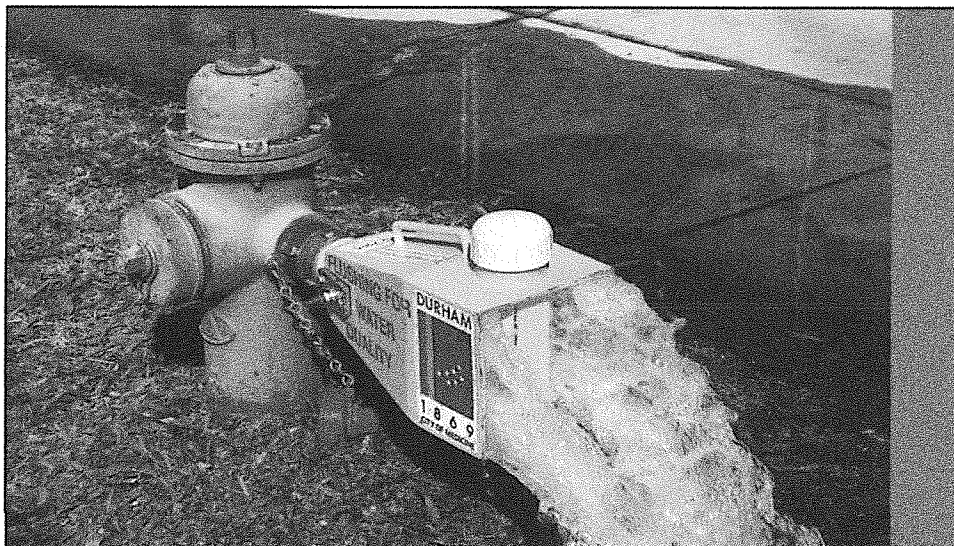
## Disinfection & Flushing

### ❑ Dechlorination

- After required retention period, heavily chlorinated water must be removed from the main and the fittings in order to prevent corrosion of the lining
- The system may be flushed with a dechlorinating agent for this purpose
- A dechlorinating diffuser may be attached to the discharge outlet minimizing the environmental impact of water runoff

121

121



### Flushing

A fire hydrant flushing water via a diffuser in front of the Durham School of the Arts on West Morgan Street in Durham, North Carolina. 12 February 2011

Photo Source: Ular Sagdejev [https://commons.wikimedia.org/wiki/File:2011-02-12\\_fire\\_hydrant\\_flushing.jpg](https://commons.wikimedia.org/wiki/File:2011-02-12_fire_hydrant_flushing.jpg)

122

122

## Putting Main into Service

## Disinfection &amp; Flushing

☐ Flushing

- Water is flushed to an acceptable location
  - Locations may be storm sewer, storage pond, or flood control channel as permitted by local regulation
- Fire hydrants normally used
- Primarily necessary to remove mud and debris from installation
- Required velocity
  - At least 2.5 feet / second, preferably 3.5 feet / second
  - Maintained long enough to allow 2-3 complete changes in water
- If pipe is too large, or there is insufficient water to flush, polypigs may be used

123

123

## Putting Main into Service

## Disinfection &amp; Flushing

☐ Bacteriological Testing

- Tests must meet requirements of regulatory agencies
  - 2 samples taken, 24 hours apart
- Samples must be analyzed by certified laboratory
- Results of analysis must show that samples tested negative (no coliform present) before customers are allowed to use water
- If results fail —
  - Water must be tested again
  - If water fails second test, entire disinfection process must be repeated, including sampling and bacterial testing

124

124